



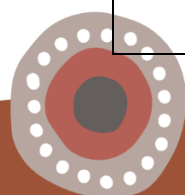
**FIRST
NATIONS
HEALTH EQUITY**

**IN ACTION CONFERENCE
2024**

DAY 1: TUESDAY 22ND OCTOBER

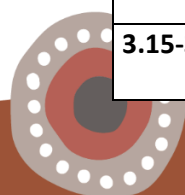
8.30-8.50am	<p>Welcome to Country – Nunukul Yuggera Welcome Ceremony <i>Room: Boulevard Room</i></p>		
8.50-9am	<p>Welcome to Conference – Our Statement of Commitment to Health Equity in SEQ Chairs: Wayne Ah Boo (IUIH CEO) and Bernard Curran (MNHHS Board Chair)</p>		
9-9.30am	<p>Keynote Address: Review, Reflect, Refresh: SEQ First Nations Health Equity in Action in 2024 Speakers: Kieran Chilcott (IUIH Board Chair and Kalwun CEO) and Heather Watson (CHQ Board Chair)</p>		
9.30-9.45am	<p>Panel Reflections Uncle Les Collins, Aunty Mary Graham and Aunty Mary Martin Facilitator: Renee Brown (IUIH)</p>		
9.45-10.15am	<p>Keynote Address: Reviewing The National Agreement on Closing the Gap: Findings from the Productivity Commission Presenter: Selwyn Button (Indigenous Policy Evaluation Commissioner)</p>		
10.15-10.45am	<p>MORNING TEA</p>		
10.45am-12.15pm	<p>Workshop: Championing Indigenous Data Sovereignty for Health Equity Chairs: Renee Brown (IUIH) and Kristy Hayes (GCHHS) <i>Boulevard Room</i></p>	<p>Youth Mental Health Workshop Chairs: Libby Dunstan (BNPHN) and Renee Blackman (ATSICHS Brisbane) <i>Room: B1&2</i></p>	<p>When the system works together to support our old(er) people Chairs: Dallas Leon (IUIH) and Alex Thompson (QAS) <i>Room: B3</i></p>
10.45-11.15am	<p><i>Presenters: Dr Trisha Johnston (Senior Director Statistical Services Branch, Queensland Health) RAUGH representative, DIFFERENCE representative, Letitia Campbell (Kalwun), Lyle Turner (IUIH).</i></p>	<p>Setting the Scene: Hearing from our youth advisory <i>Presenters: Boe Spearim (IUIH), Kristie Harris (IUIH), Clare Mangoyana (IUIH), Finnegan Kelly & Takeisha Riley (representatives from the Youth Advisory Committee)</i></p>	<p>Elders Early Intervention & Connection Programs <i>Presenters: Anu Manoharan (BNPHN), Sylvia Reihana (IUIH)</i></p>

	<p>This workshop will focus on the critical role of Indigenous data sovereignty when linking and sharing data to improve health outcomes for Aboriginal and Torres Strait Islander people in SEQ. We will highlight current data-driven projects that embody these principles and provide practical examples. This interactive session will explore opportunities in creating a shared data portal, ensuring it respects and upholds the needs, rights, and self-determination of Aboriginal and Torres Strait Islander communities, and promotes</p>	<p>This presentation will provide an overview of a project undertaken to establish a youth advisory group for SEQ First Nations young people. The project aimed to understand the governance, infrastructure, and methods for engaging young people with primary health care services. You will hear from the project team as well as members of the youth advisory group.</p>	<p>In 2023, IUIH's Early Intervention (Chronic Conditions and Social Isolation) program, was co-designed to facilitate the coordination of support for Elders over 50s across Brisbane Northside. The program took a holistic approach to supporting Elders, identified as socially isolated or living with chronic conditions, to work alongside of them to connect with appropriate health, social and aged care services both within the IUIH Network and wider community.</p>
<p>11.15-11.45am</p>	<p>Indigenous data sovereignty.</p>	<p>Staying Deadly Hubs and Staying Deadly Headspace: New partnerships and progress <i>Presenters: Josephine McCormack (IUIH) Jasmine Anderson (IUIH), Jo Chapman (WMHHS)</i></p> <p>The last two SEQ FNHE In Action conferences have reported on the mental health needs of First Australians in SEQ and how we meet them. In this presentation we will hear about progress made in the last 12 months in establishing the first Staying Deadly Hub and the nation's first Staying Deadly Headspace.</p>	<p>When generations come together for better outcomes <i>Presenters: Anu Manoharan (BNPHN) Sylvia Reihana (IUIH), IUIH AHA's</i></p> <p>A partnership between IUIH, BNPHN and the state government resulted in the collaborative design of an inter-generational program across SEQ promoting social and cultural connections between older people and high school students. This presentation will outline the program and provide outcomes and reflections from participants.</p>
<p>11.45-12.15pm</p>		<p>Workshop</p>	<p>Problem-solving together: Keeping mob out of ambulances (and hospitals) <i>Presenters: Moblink and Queensland Ambulance Service</i></p>

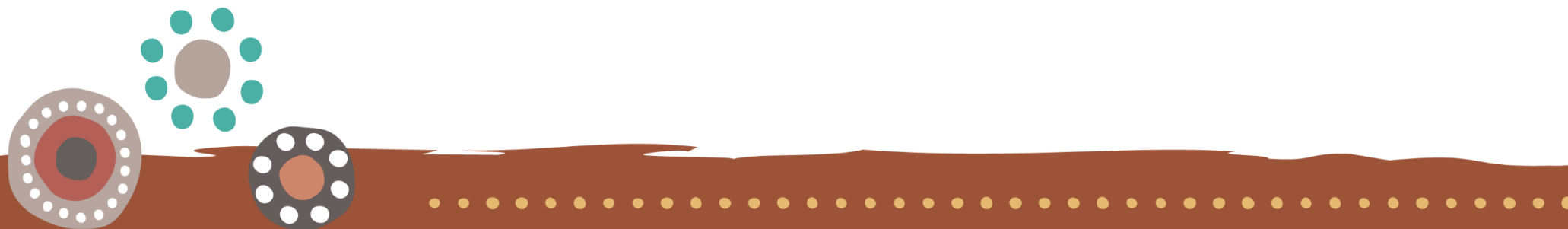


				This presentation will outline work undertaken between Moblink and QAS to problem solve and develop alternate pathways to ambulance trips and hospitalisation. Hear about how these yarns developed, ways the teams have worked together and what their next steps are.
12.15-1pm	LUNCH			
1-1.15pm	Afternoon Keynote Session Chairs: Renee Blackman (ATSICHS Brisbane) and Peter Steer (Mater) Murri School Dancers			
1.15-1.45pm	Plenary Session: System transformation: When families are strong, and the system becomes vulnerable Speakers: Kristie Watego (Executive Director, MATSICHS) and Keryn Ruska (Manager, Community Legal Service, IUIH) <i>Room: Boulevard Room</i>			
1.45-3.15pm	When the system works together for families and children Chairs: Renee Blackman (ATSICHS Brisbane) and Dom Tait (CHQ) <i>Boulevard Room</i>	Workshop: Collaborative Community-led program design Chairs: Jane Hancock (MNHHS) and Rachelle Foreman (BNPHN) <i>Room: B1 &2</i>	The SEQ FNHE Workforce Strategy: Where are we up to? Chair: Michael Cleary (MSHHS) <i>Room: B3</i>	
1.45-2.05pm	Breaking Barriers and Strengthening Families: <i>Presenters: Sally Brunton (Mater Mothers Hospital) and Jayde Lewis (BIOC Salisbury)</i> Outcomes from a collaborative approach by IUIH, ATSICHS, and Mater Mothers Hospital (MMH) to improve the health and well-being of mothers, babies and families in our community. (BIOC)	Moving beyond 'co-design' – what does propa collaboration between community and mainstream services look like? A worked example of the Persistent Pain Service – A Caring Pathway for Mob. <i>Presenters: Lisa Mcilroy (MATSICHS), Morgan Brodhurst-Hill (IUIH), Jen Setchell (IUIH), Kaydi Enoch (MATSICHS), Nungalka Davis-Angeles (IUIH), Jenaya Emzin</i>	Overview of the progress against the FNHE Workforce Strategy and introduction to the workforce pipeline (1.45-2.15pm) <i>Presenter: Alison Nelson (IUIH)</i>	

<p>2.05-2.35pm</p>	<p>Supporting Child development across the system <i>Presenters: Milissa Phillips (Deadly Kindies), Alana Turnbull (IUIH Paeds) and Anna Scuito (ATSICHS Brisbane)</i></p> <p>This presentation will highlight a number of initiatives supporting early childhood development including Deadly Kindies intensive playgroups and CCP funded multi-disciplinary Team assessment models which can detect developmental concerns and provide integrated support for families.</p>	<p><i>(MATSICHS), Caroline Zanussi (TCPRC), Suet Yi Yam (TCPRC)</i></p> <p>A new service, the <i>Persistent Pain Service: A Caring Pathway for Mob</i> is a partnership between the Institute for Urban Indigenous Health (IUIH) and the Tess Cramond Pain and Research Centre (TCPRC), a Metro North specialist tertiary-based pain management service. The service is collaboratively managed and operated by Aboriginal and Torres Strait Islander and non-Indigenous employees of IUIH and TCPRC. We offer a 90 minute workshop to work though a good (but not perfect!) example of ‘propa’ design and delivery of services.</p>	<p>Pathways to Allied Health for Indigenous students (2.15-2.45pm)</p> <p><i>Presenters: Felicity Prebble (Mater Health Services), Tracy Hill (Pathways Our Way Academy (POWA), IUIH)</i></p> <p>In 2023, a pilot program was initiated through a partnership between Mater and IUIH to coordinate a one day health career modelling program for First Nations high school students enrolled in a Cert III Allied Health Assistance with POWA. Eighteen students attended a one-day program of simulated learning, covering all aspects of physiotherapy across the spectrum of the life span. Further mentoring and assistance were provided by staff at IUIH to pursue bachelor’s degree enrolment with partner universities, and the Mater Physiotherapy-</p>
<p>2.35-2.55pm</p>	<p>Moblink/MobED: Supporting families to navigate (and avoid) systems <i>Presenters: Maria Uhr (Moblink) and Wendy Stafford (MobEd)</i></p> <p>Case studies of the ways in which shared workforce and systems integration can assist in supporting families who might otherwise be notified to child protection.</p>		
<p>2.55-3.15pm</p>	<p>Panel Yarn: We’re not there yet... How can we continue to improve and transform the system? <i>Panel: Alf Davis (IUIH), Serin Borton (IUIH), Wendy Stafford (CHQ), Maria Uhr (Moblink)</i></p>		<p>Examples of FNHE Workforce Strategy in Action.</p> <p>Panel yarn with First Nations participants in the workforce pipeline (2.45-3.15pm) Come and hear firsthand accounts of how the FNHE workforce pipeline is working to grow a First Nations Health workforce.</p>
<p>3.15-3.45pm</p>	<p>AFTERNOON TEA</p>		

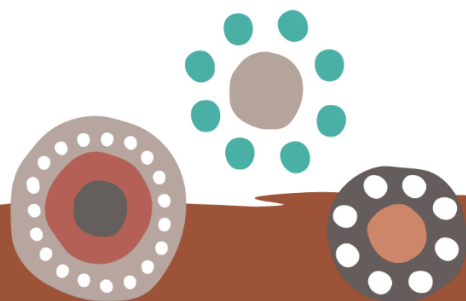


3.45-4pm	Keynote Address: Michael Walsh, Director General, Queensland Health Chairs: Prof Cindy Shannon (GCHHS) and Uncle Cheg (Gregory) Egert (IUIH/YBB)
4-4.30 pm	Graduation Celebration for Deadly Start and POWA Trainees
4.30-6pm	Connecting Event and Celebration <i>Boulevard Foyer</i>



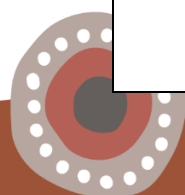
DAY 2: TUESDAY 23 OCTOBER

8.30-8.45am	<p align="center">Welcome and Housekeeping Chairs: Renee Blackman (ATSICHS Brisbane) and Noelle Cridland (MSHHS) <i>Room: Boulevard Room</i></p>		
8.45-9.15am	<p align="center">Keynote Presentation: Accelerating outcomes through a regional approach. Speaker: Adrian Carson <i>Room: Boulevard Room</i></p>		
9.25-10am	<p align="center">Panel Yarn: Funding Reform: Some practical steps forward Facilitator: Dawn Schofield (IUIH) Panel: Libby Dunstan (BNPHN), Wayne AhBoo (IUIH), Ron Calvert (GCHHS)</p>		
10-10.30am	<p align="center">When the System works together for better clinical quality and safety Clinical Incident Management for shared care services Presenters: Carmel Nelson (IUIH) and Grant Carey-Ide (MNH) <i>Room: Boulevard Room</i></p>		
10.30-11am	<p align="center">MORNING TEA</p>		
11am-12.40pm	<p>Providing Optimal Cancer Care for First Nations People in SEQ Chairs: Associate Professor Melissa Eastgate (MNHHS) and Michael Cleary (MSHHS) <i>Boulevard Room</i></p>	<p>Connected Community Pathways: From Funding to Action Chairs: Kristie Watego (MATSICHS) and Ron Calvert (GCHHS) <i>Room: B1&2</i></p>	<p>Improving Health Equity through Whole of Community Approaches Chair: Mike Bosel (BSPHN) and Lucille Chalmers (DDWMPHN) <i>Room B3</i></p>

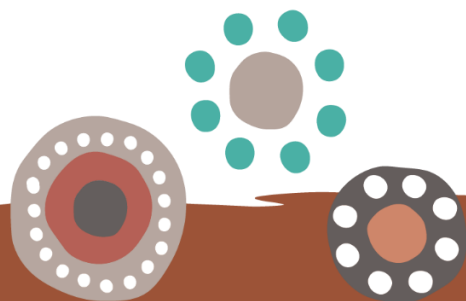


<p>11-11.25am</p>	<p>Cancer and other neoplasms were the leading cause of death for Aboriginal and Torres Strait Islander peoples between 2015 and 2019 (AIHW, 2024), representing a significant health challenge. Across South East Queensland (SEQ) work is being conducted across the spectrum of the Optimal Cancer Care Pathway in order to improve access to culturally safe care and improve First Nations patient outcomes. This session will spotlight several key projects currently being conducted across SEQ, and consider how we can continue to improve and evolve as we deliver optimal cancer care across SEQ.</p>	<p>Implementation of a Collaborative After Hours Service Project <i>Presenters: Louise Luparia (BNPHN), Charlene van Heerden (BSPHN), Sam Pope (IUIH)</i></p> <p>To increase access to after-hours primary care for Aboriginal and Torres Strait Islander peoples in Brisbane North and South, the Brisbane North PHN and Brisbane South PHN regions are investing in IUIH to expand their services into extended and after-hours (in-clinic and virtual via Mob Link). This presentation will outline the process of collaboration and lessons learned along the way.</p>	<p>Deadly Choices Partnerships <i>Presenter: Dallas Leon (IUIH)</i></p> <p>This presentation will provide an overview of some of the ways in which the Deadly Choices program, funded in part through Health and Wellbeing Queensland, is able to reach a large First Nations population by being ‘by mob and for mob.’</p>
<p>11.25-11.50am</p>		<p>Urban Respiratory Indigenous Outreach Clinic (UROC) - Improving Indigenous health outcomes through strong partnership <i>Presenters: Prof Peter Hopkins (MNHHS), Dr Halina Clare (MATSICHS)</i></p> <p>The Urban Indigenous Respiratory Outreach Clinic (UROC) initiative is a partnership between Metro North Health and the Institute for Urban Indigenous Health (IUIH), which aims to deliver specialist respiratory services to Aboriginal and Torres Strait Islander people closer to home at two Moreton Aboriginal and Torres Strait Islander Community Health Service (MATSICHS) Margate and Morayfield clinics.</p>	<p>Working Together to Promote Health to the Gold Coast Community - The Karulbo Partnership. <i>Presenters: Paula Rankmore (GCHHS) and Sharna Willie, Chairperson Karulbo Committee</i></p> <p>The Karulbo partnership (previously known as the Gold Coast Karulbo Aboriginal and Torres Strait Islander Health Partnership Advisory Group) has been redeveloped as a partnership between Kalwun Health Service, Gold Coast HHS and the Gold Coast PHN. This presentation will describe the reformation of the partnership and the structure & processes used to ensure grassroots community engagement and representation to promote health and wellbeing to Gold Coast mob.</p>

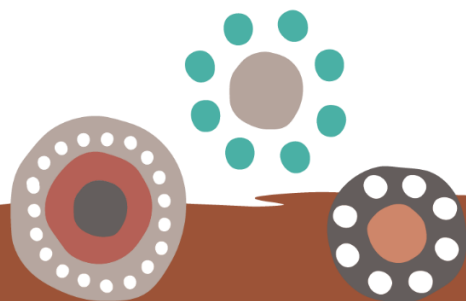
<p>11.50am-12.15pm</p>		<p>Heart Outreach Program for Health Equity (HOPE) - Partnership between Metro North Health and Institute of Urban Indigenous Health (IUIH) <i>Presenters: Dr. Halina Clare (MATSICHs), Tiffany Roberts (RBWH)</i></p> <p>The Heart Outreach Program for Health Equity (HOPE) initiative provides specialist cardiac services to Aboriginal and Torres Strait Islander peoples in culturally safe and respectful environments at the Moreton Aboriginal and Torres Strait Islander Community Health Service (MATSICHs) clinics at Margate and Caboolture.</p>	<p>Improving Public Health Through Collaboration <i>Presenters: Rochelle Robinson (IUIH Public Health), TBC (Queensland Public Health and Scientific Services (QPHaSS branch))</i></p> <p>This presentation will describe the ways in which Queensland Health and the Community-Controlled sector have collaborated to meet mutual goals of strengthening public health in SEQ for mob. Practical examples of what has worked (and what hasn't) will be provided as well as outcomes from this collaboration including the establishment of a syphilis POCT model of care and support with resourcing and establishing processes, workforce and ongoing collaboration.</p>
<p>12.15-12.40pm</p>		<p>Heart and Lung Rehab Programs - A Regional Update <i>Presenter: Katrina Ghidella (IUIH)</i></p> <p>The CCP funded Heart and Lung Rehab programs provide specialised rehabilitation to Aboriginal and Torres Strait Islander peoples not currently accessing treatment, as a culturally capable alternative to hospital rehabilitation and for high acuity clients who commence rehabilitation in hospital and could subsequently transition into the IUIH service. This presentation will report on progress to date and enablers & barriers to client participation in these programs.</p>	<p>Yarning Together: Collaborative Strategies for First Nations Health Improvement <i>Presenters: Michelle Johns (BSPHN) Peter Boney (IUIH)</i></p> <p>This project highlights a partnership between MSPHU, BSPHN and IUIH to provide support and upskilling for mainstream general practice staff, aiming to elevate their capability to engage effectively with First Nations patients.</p>



12.40-1.30pm	LUNCH		
1.30-2.45pm	<p>Workshop: Sharing workforce to grow capacity and improve outcomes Chairs: Michael Cleary (MSHHS) and Carmel Nelson (IUIH)</p> <p><i>Boulevard Room</i></p>	<p>Systematic Re-orientation: Unpacking Institutional Racism Yarn Chairs: Kerry Ruska (IUIH)</p> <p><i>Room: B1 & 2</i></p>	<p>Working across sectors to prevent and support mob in the justice system Chairs: Kaava Watson and Hannah Bloch (WMHHS)</p> <p><i>Room: B3</i></p>
	<p>Workshop: Sharing workforce to grow capacity and improve outcomes <i>Presenters: Shuichi Suetani and Alana Turnbull (IUIH)</i> <i>Panel: Christopher Gandar Jacqueline Fleetwood, Nadia Leonidou</i></p> <p>The SEQ FNHE Workforce Strategy has identified that shared workforce initiatives are an important initiative in skilling workforce and helping to stitch the system together for mob. In this workshop you will hear from a panel of Registrars and Supervisors about the ways in which shared workforce models can work across the sector. A workshop to discuss and explore ways these models could be scaled up in SEQ will follow.</p>	<p><i>Presenters: Angela Young (CHQ) and Kristy Hayes (GCHHS)</i></p> <p>Building on last year's presentation from the Human Rights Commission, in this presentation we will hear updates from across SEQ HHSs about how they are preparing for, and increasing visibility of, complaints relating to racism in their institutions.</p> <p>We will explore how complaints are being captured and managed and how we can increase visibility of institutional racism in clinical care, starting with using an Aboriginal and Torres Strait Islander identifier in the recording of clinical incidents.</p>	<p>In this session we will hear from a range of presenters about how we can provide preventative programs and support people in the justice system and when they transition back into the community.</p> <p>Sharing stories of prevention: <i>Presenter: Tracy Hill (POWA, IUIH)</i> Hear about how the Pathways Our Way Academy's traineeship programs can support young people at risk of entering the justice system and help to provide an alternative pathway through wrap around support.</p>



	<p>Workshop</p>	<p>Prisons and youth detention initiatives: <i>Presenters: Blake Ponting and Suzanne Suthers (WMHHS)</i> Hear from the WMHHS team about their initiatives to support mob in prison.</p> <p>Prison transition services: <i>Presenters: Randall Fraser and Andrew Cummins (IUIH)</i> Hear from the IUIH Regional Social Health team about the ways in which they support people who have come out of prison and fill in the gaps in the system.</p> <p>Sharing stories of strength.</p>
<p>2.45-3.15pm</p>	<p>Closing Address: Taking the Health Equity Journey forward Chairs: Kieran Chilcott and Janine Walker (MSHHS) Speaker: Professor Cindy Shannon (GCHHS)</p> <p><i>Room: Boulevard Room</i></p>	
<p>3.15-3.45pm</p>	<p>AFTERNOON TEA (Final Gathering)</p>	





Metro North Health



Queensland Government

Metro South Health



Queensland Government

West Moreton Health



Queensland Government

Gold Coast Health
always care



Queensland Government

Children's Health Queensland
Hospital and Health Service



Queensland Government

mater

phn
BRISBANE NORTH
An Australian Government Initiative

phn
BRISBANE SOUTH
An Australian Government Initiative

phn
GOLD COAST
An Australian Government Initiative

phn
DARLING DOWNS
AND WEST MORETON
An Australian Government Initiative



Queensland Ambulance Service

www.seqfnhe.org.au